

Turbines Past

“Reading is nothing but an extended cess pool”

Dr Southwood Smith Royal Commission on the Heath of Towns 1847

In Wokingham, Cookham or Easthampstead you’d live 5 years longer!

“Things in human shape—aldermen, deputies, common councilmen—are seen disporting in the liquid dirt as in their native element.”

It was MUCH worse than the Whitley Whiff!

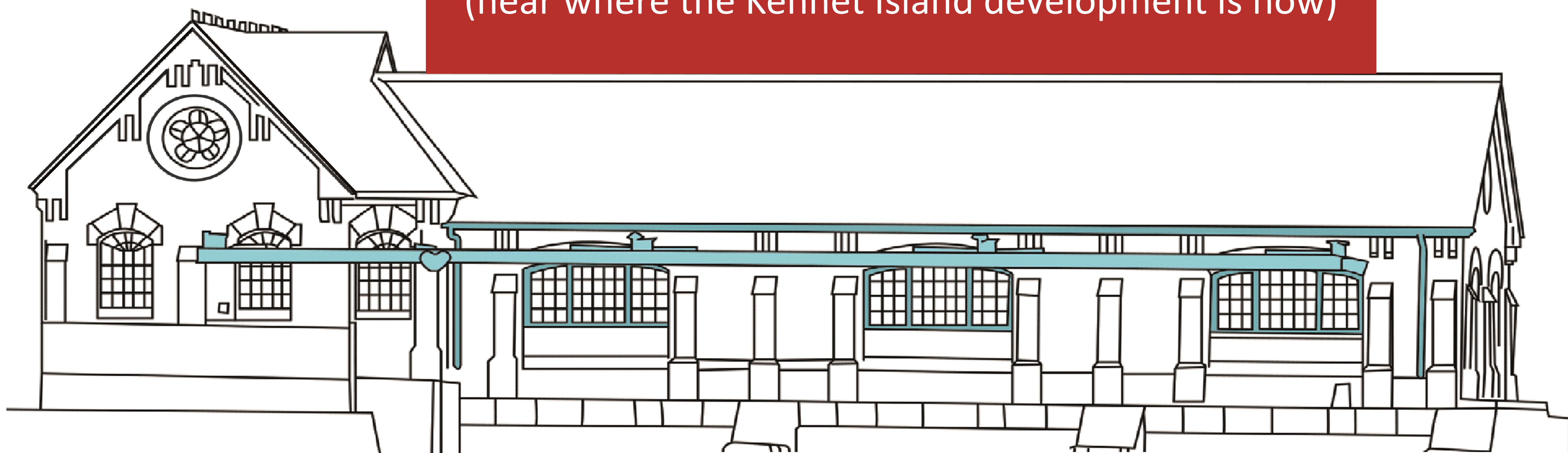


A sewage scheme was debated for years—Alderman Brown even said that it would be “impious”

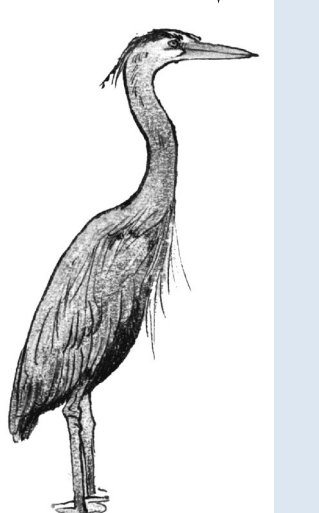


A Drop of Thames Water
Punch 1850 Wellcome Library
Copyrighted work available under Creative Commons
Attribution only licence CC BY 4.0

In 1873 they finally built our lovely Turbine House using the power of the River Kennet to pump poo up to Manor Farm sewage works (near where the Kennet Island development is now)



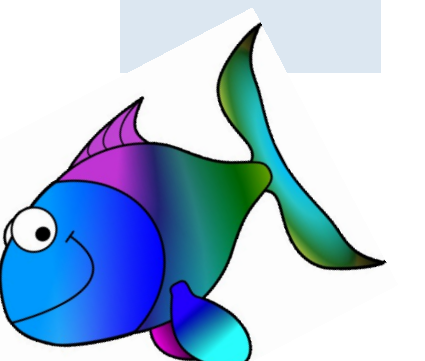
Drat!
Missed again



Fish ladder

WEIR

Whew!
Made it!



I’m glad they made the fish ladder so we have some chance of getting up & down the river



And the Turbine House was a great step in making the rivers cleaner



Under your feet [A] is a large turbine [B]. The river flow made it turn. This turned a gear [C] which turned the big gear [D] that you are standing next to. The axle [E] turned which made the pumps you can see by the front door go up and down.

